



Student housing is increasing in demand and the Wild Wood (408-30) would be ideal. It is a four unit building with each unit containing 923 square feet. The unit is two-story and may require a parking area as none of the units come with a garage. There is a large bike storage area, easily placed on

either end or placed on both ends with the revision of the plans. The façade of the unit is simple with a picket railing across the face of the second floor.

Each unit contains the same basic floor plan. They have, however, been mirrored in two of the units, making the dining

rooms back-to-back. The front door opens facing the living room in each unit. On two of the units the kitchen is on the right and a half bath and stairway is on the left. The other two units are just opposite.

Past the kitchen is a dining room that blends into the living room. Under the stairs is a storage closet with the water heater tucked away. The living room has sliding doors that open onto the back yard.

Upstairs are two bedrooms with a bath between. The stairs and the bath are reversed in two of the units to match the downstairs. Bedroom 1 is the larger of the two bedrooms with a wall closet running the length of the entire wall. The bathroom has a tub and single sink. A linen closet is in the hall. Bedroom 2 has a corner wall closet with a raised built-in cabinet and shelf.

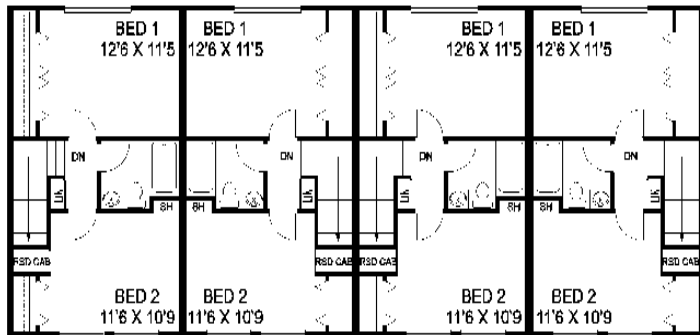
This quad is so simply designed that it would ideal to be part of an apartment complex. While the apartments are not large, they are ideally sized for students or lower income housing. It should also be economic to build and does not require a large amount of lot space.

For a study plan of the WILD WOOD (408-30), send \$25.00, to Landmark Designs, PO Box 5625, Eugene, OR 97405 or call 1-800-562-1151. Be sure to specify plan name and number. Compact disks, with search functions are free of charge, to help you search our portfolio for your dream home (\$5.00 shipping and handling will apply). Or you may order or search online at www.lldiplans.com. Save 30% on construction plans using the code (LLM30) online, mailing, or calling 1-800-562-1151.

WILD WOOD (408-30)

OVERALL DIMENSIONS: 71'-6" X 30'-0"

LIVING: 923 square feet/unit



SECOND FLOOR PLAN
443 SQ FT/UNIT

FIRST FLOOR PLAN
480 SQ FT/UNIT

