



© DESIGN BASICS, Inc.

WINROCK COURT —D9224—

This elegant home with rock trim, arched windows, doorframes, and garage doorframes is very classic looking. The Winrock Court (D9224) has great eye appeal from the street. Rooflines have been used to add to the wonderful look of the façade. The covered porch is enclosed and is accented with rock.

Inside this two-story home is a huge great room directly in front of the entry. A fireplace is in the rear corner two large windows look out over the backyard.

The nook is large and open to the great room. It has a cathedral ceiling, which makes the room seem even larger. Sliding glass doors open to the backyard.

The kitchen runs down the outside wall. Counter space is very abundant. A recycle area has been set up in part of the cabinets under the counter. A built-in dishwasher, range and oven, and a refrigerator complete the appliances along the wall. On a separate arm are a dual sink and an eating bar. Stairs to the unfinished basement are

between the counter and the pantry. The utility room is across from the pantry and a door opening into the two-car garage completes the kitchen area.

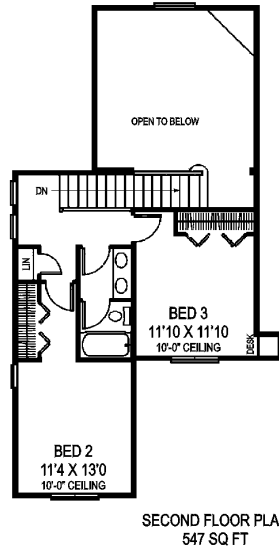
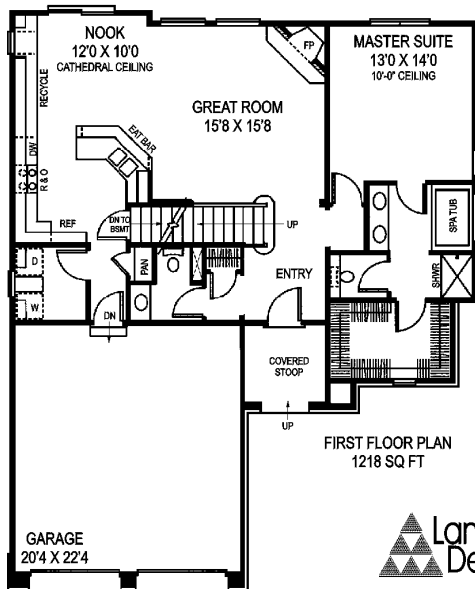
The master suite with its 10-foot ceiling runs the entire length of the right side of the Winrock Court. The master bathroom has a large spa tub, "his and her" sinks, an oversized shower and a private stall area. Walking on through brings one to an enormous walk-in closet with a window that faces the front and adds light to the room.

To the left of the entry is a half bath and coat closet. Stairs to the second floor are here also. Two bedrooms make up the second floor. Each room has a long wall closet and 10-foot ceilings. A full bathroom is adjacent to the bedrooms with the sinks in an outer room and tub behind another door.

The total living area of this home is 1,765 square feet and the unfinished basement is 1,218 square feet. This would be an ideal home for a family that needs to expand and make use of the basement.

For a study plan of the WINROCK COURT (D9224), send \$25.00, to Landmark Designs, PO Box 5625, Eugene, OR 97405 or call 1-800-562-1151. Be sure to specify plan name and number. Compact disks, with search functions are free of charge, to help you search our portfolio for your dream home (\$5.00 shipping and handling will apply). Or you may order or search online at www.ldiplans.com. Save 30% on construction plans using the code (LLM30) online, mailing, or calling 1-800-562-1151.

COPYRIGHT DESIGN BASICS, Inc.
WINROCK COURT (D9224)
OVERALL DIMENSIONS: 42'-0" X 52'-0"
LIVING: 1765 square feet
UNFIN BASMENT: 1218 square feet
GARAGE: 476 square feet



Landmark
Designs
INC.